

MK-101 Pro24 JCS OWNER'S MANUAL OPERATING INSTRUCTIONS

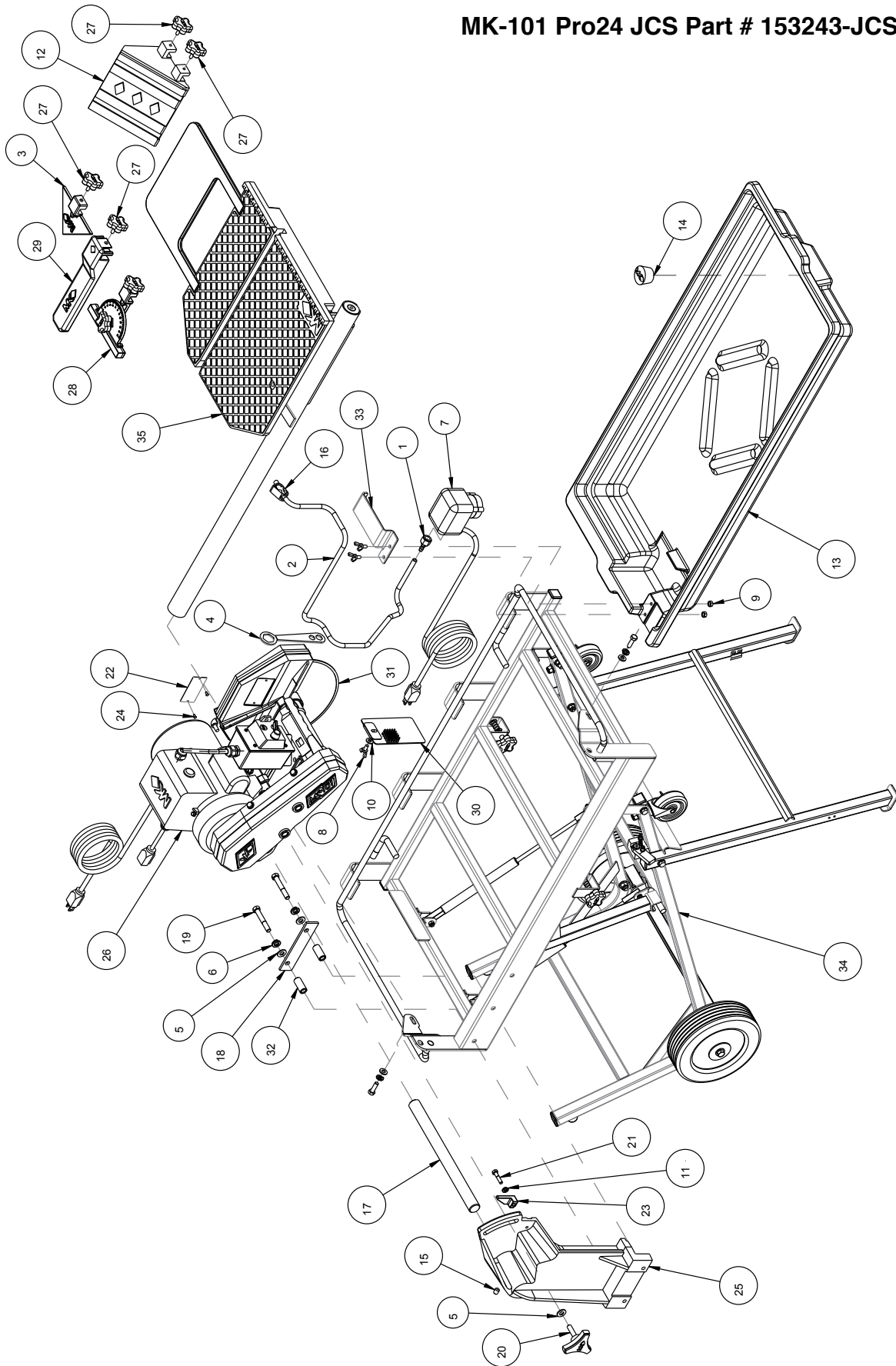


U.S. Patent No. 7,419,538

| | |
|---------------------|---------|
| Revision 201 | 06.2013 |
| Manual Part #162059 | |

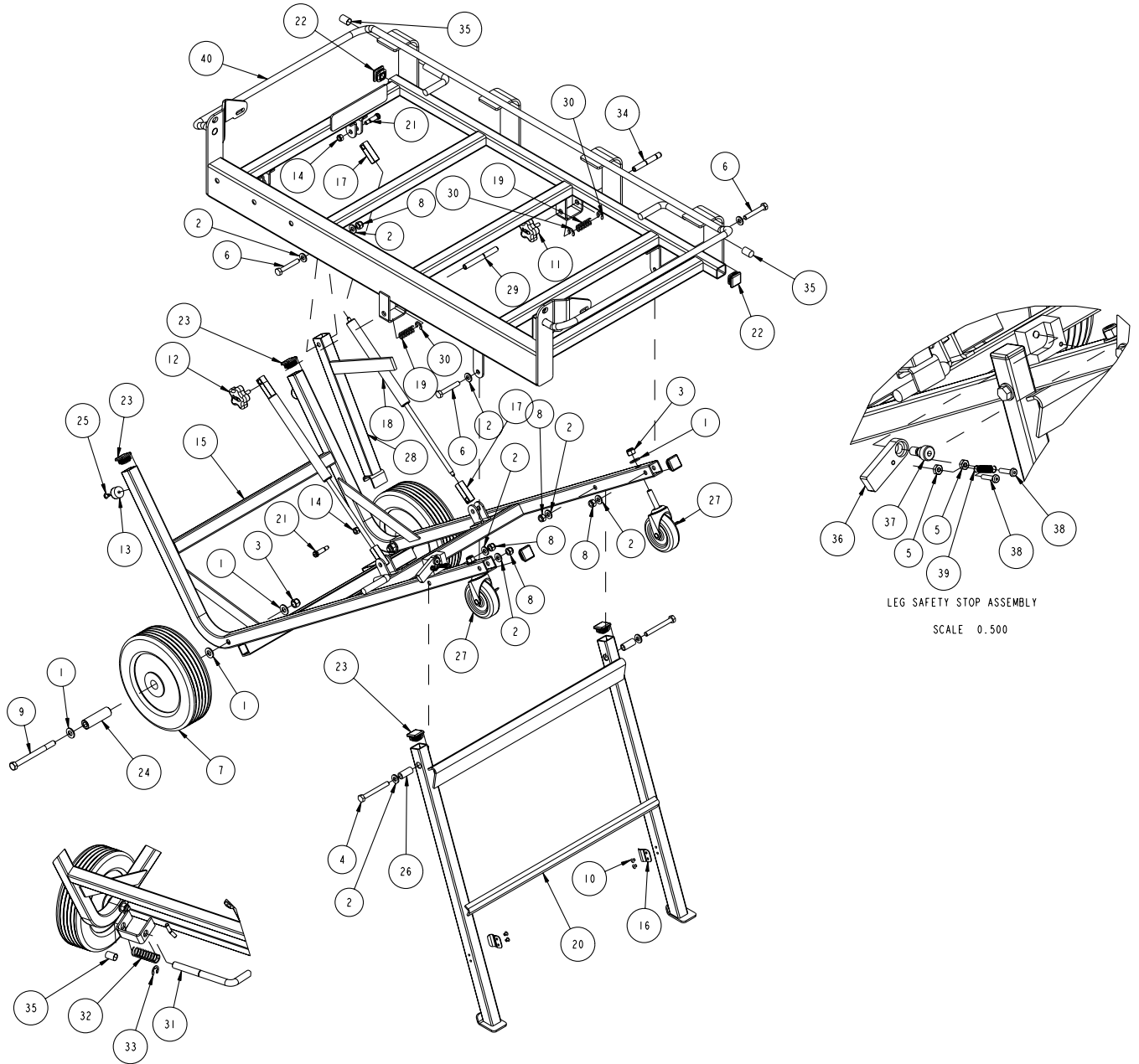
Caution: Read all safety and operating instructions before using this equipment. This parts list **MUST** accompany the equipment at all times.

MK-101 Pro24 JCS Part # 153243-JCS



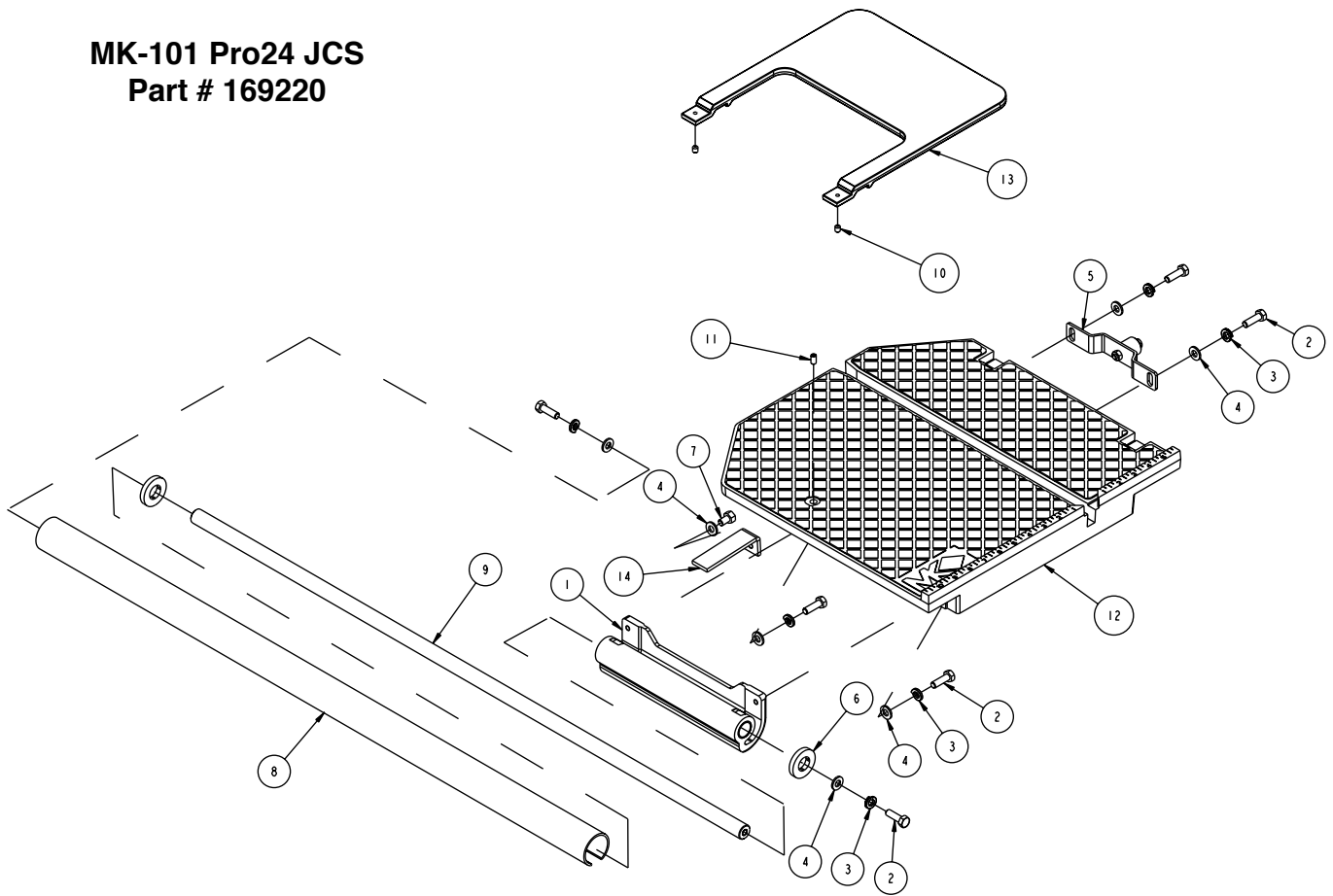
| Item | Description | Part# | Qty |
|------|---------------------------------------|-----------|-----|
| 1 | FITTING, PLASTIC, 1/4 FNPT X 1/4 BARB | 128397 | 1 |
| 2 | HOSE, VINYL, 1/4 X 3/8 TSAW | 132951 | 1 |
| 3 | CASTING, ACC DUAL FLAT-COMP | 134577 | 1 |
| 4 | WRENCH, TILES AW, 15/16 CSD END | 134684 | 1 |
| 5 | WASHER, FLAT, SAE, 3/8 | 150923 | 3 |
| 6 | WASHER, LOCK, SPLIT, 3/8 | 150925 | 3 |
| 7 | PUMP, WATER 115V/60HZ UL/CSA | 151271 | 1 |
| 8 | SCREW, WING, 1/4 - 20 X 1/2 | 151888 | 3 |
| 9 | NUT, HEX, 1/4 - 20 | 151893 | 2 |
| 10 | WASHER, 1/4 SAE FLAT | 151915 | 1 |
| 11 | WASHER, 1/4 SPLIT COCK | 152591 | 2 |
| 12 | CASTING, ACC BULLNOSE LRG - COMP | 153201 | 1 |
| 13 | PAN, WATER | 153262 | 1 |
| 14 | PLUG, RBBR DRAIN W/O HOLE | 153439 | 1 |
| 15 | SCREW, SET, SOC, CUPT, 3/8 - 16 X 1/2 | 153710 | 1 |
| 16 | CLAMP, HOSE 1/2 - 3/4 | 154394 | 1 |
| 17 | SHAFT, 12.88 PIVOT | 155530 | 1 |
| 18 | PLATE, PRESSURE | 155671 | 1 |
| 19 | SCREW, 3/8 - 16 X 1/2 HEX HEAD CAP | 156030 | 2 |
| 20 | KNOB, TRI PLASTIC MK-660 1 - 1/2 | 156770-02 | 1 |
| 21 | SCREW, HEX HD 1/4_20 X 1-1/4 | 157145 | 1 |
| 22 | TAG, SERIAL NUMBER, BLANK | 157500-RW | 1 |
| 23 | STOP, CUTTING HEAD | 157728 | 1 |
| 24 | DRIVE SCREW, #7 X 5/16 ROUND HEAD | 157849 | 2 |
| 25 | CASTING, POST, PRO24 OFFSET-COMP | 158405 | 1 |
| 26 | ASSY, DC CUTTING HD, MK-101PRO | 158481 | 1 |
| 27 | KNOB, RUBBER, 1/4 - 20 X 3/4" LONG | 159428-1 | 4 |
| 28 | PROTRACTOR, 90 DEG | 159429 | 1 |
| 29 | RIP GUIDE, LARGE DIE CAST (COMP) | 159751-RW | 1 |
| 30 | GUARD, SPLASH | 160310 | 1 |
| 31 | MK-225 10 X 050 X 5/8 4 MM SAWS | 160593 | 1 |
| 32 | SPACER, 5/8 X .385 X 1.4 | 160654 | 2 |
| 33 | CLAMP, PUMP HOLDING | 162054 | 1 |
| 34 | ASSY, PORTABLE STAND, JCS | 169218 | 1 |
| 35 | ASSY, TABLE, PRO-24 JCS | 169220 | 1 |

JCS Portable Stand
Part # 169218



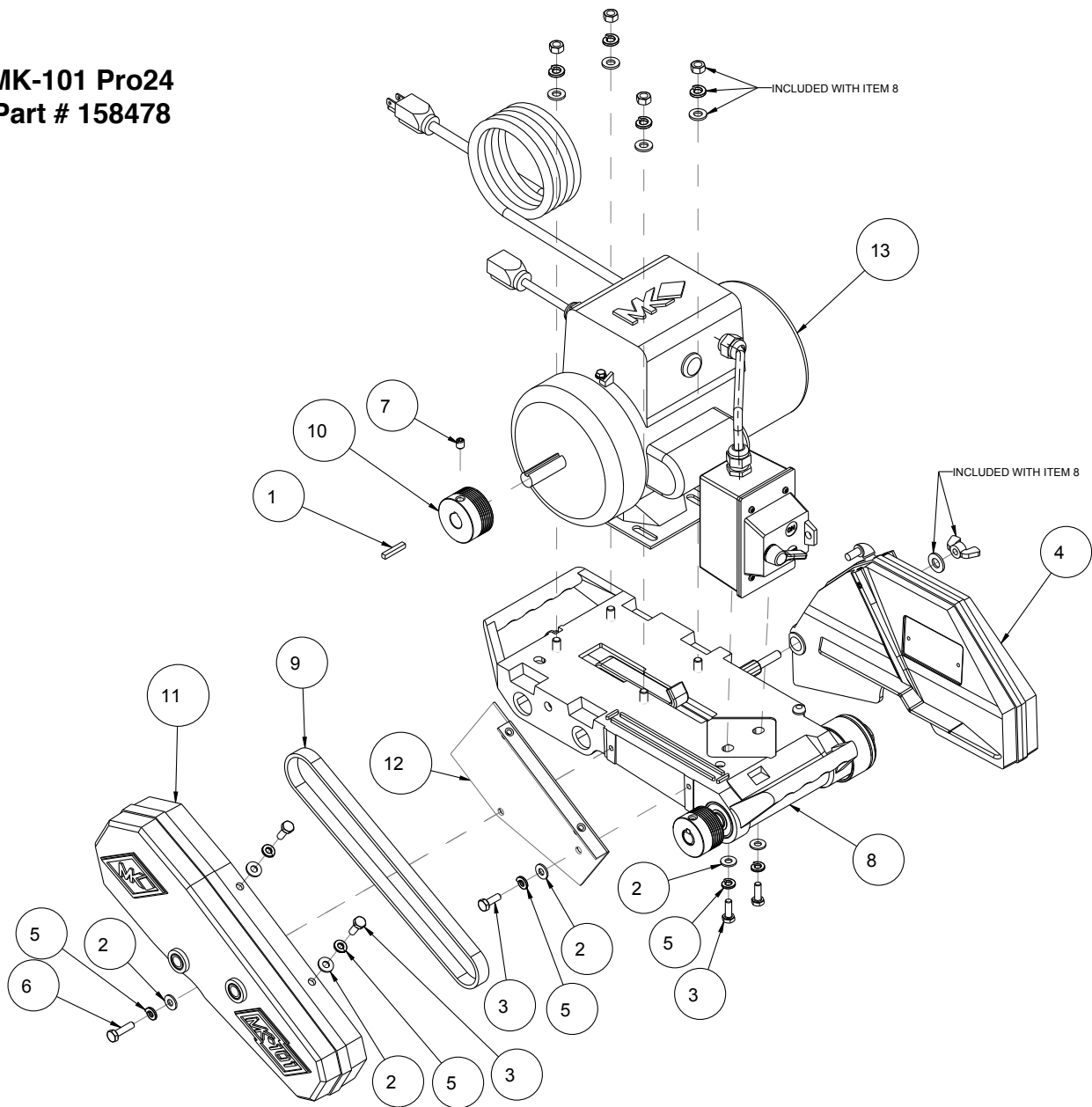
| Item | Description | Part# | Qty |
|------|---|-----------|-----|
| 1 | WASHER, FLAT, SAE, 3/8 | 150923 | 8 |
| 2 | WASHER, FLAT, SAE, 5/16 | 151754 | 10 |
| 3 | NUT, 3/8 16 NYLOK HEX | 152505 | 4 |
| 4 | SCREW, 5/16 - 18 X 1 HEX HEAD MACHINE | 152520 | 2 |
| 5 | NUT, HEX, 8 -32 | 153549 | 2 |
| 6 | SCREW, 5/16 -1 8 X 2 HEX HEAD | 155494 | 2 |
| 7 | WHEEL, REAR 8" | 155986 | 2 |
| 8 | NUT, HEX, NYLK, 5/16 - 18 | 158289 | 5 |
| 9 | SCREW, HEX HD, 3/8 - 18 X 4 - 1/4 | 158604 | 2 |
| 10 | RIVET, DOME, 5/32 X .338 | 158805 | 4 |
| 11 | KNOB, RUBBER, 1/4 - 20 X 3/4" LONG BLUE | 159428-1B | 1 |
| 12 | KNOB, RUBBER, 1/4 - 20 X 3/4" LONG | 159428-1G | 1 |
| 13 | STOP, RUBBLE BUMPER | 159855 | 2 |
| 14 | NUT, HEX, HYL, 1/4 -20 | 159857 | 4 |
| 15 | WELDMENT, REAR SUPPORT | 160693 | 1 |
| 16 | PLATE, SPRING | 160694 | 2 |
| 17 | FITTING, SPRING, GAS, 1 - 1/4" | 160695 | 4 |
| 18 | SPRING, GAS, 600N STABILOUS | 160696 | 2 |
| 19 | SPRING, 1/2 X .040 X 1.75" | 160697 | 2 |
| 20 | WELDMENT, FRONT SUPPORT | 160700 | 1 |
| 21 | SCREW, SHOULDER, 5/16 X 3/4 | 160726 | 4 |
| 22 | PLUG, PLASTIC, 1 SQ - 14-20 GA | 160727-1 | 2 |
| 23 | PLUG, PLASTIC, 1 SQ - 10-14 GA | 160727-2 | 6 |
| 24 | SPACER, 3/4 X 3/8 X 2 - 1/2 | 160728 | 2 |
| 25 | RIVET, CLOSE END, 3/16, DOME STYLE | 160729-3 | 2 |
| 26 | SPACER, 1/2 X 5/16 X 1 - 1/8 | 160732 | 2 |
| 27 | CASTER, SWIVEL, 3 - 3/8 - 16 STEM | 160735 | 2 |
| 28 | WELDMENT, VERTICAL SUPPORT | 160934 | 1 |
| 29 | PIN, LOCKING | 160936 | 1 |
| 30 | RING, RETAINING, .375 X .035 | 161171 | 3 |
| 31 | PIN, LOCKING (WHEEL) | 162051 | 1 |
| 32 | SPRING, .600X .045 X 2.25 | 162052 | 1 |
| 33 | RING, RETAINING, .500X .042 | 162053 | 1 |
| 34 | PIN, LOCKING (FRAME) | 162055 | 1 |
| 35 | CAP, VINYL, 1/2" - 9/16 X .75 | 162057 | 3 |
| 36 | LATCH, FRONT SAFETY | 162540 | 1 |
| 37 | SCREW, SHOULDER, 5/16 X 2 | 162555 | 1 |
| 38 | SCREW, BTTN, ALN, CAP, #8 - 032 X 3/4 | 162557 | 2 |
| 39 | SPRING, EXTENSION, .25 X .94 X .02 | 162558 | 1 |
| 40 | WELDMENT, FRAME | 168827 | 1 |

MK-101 Pro24 JCS
Part # 169220



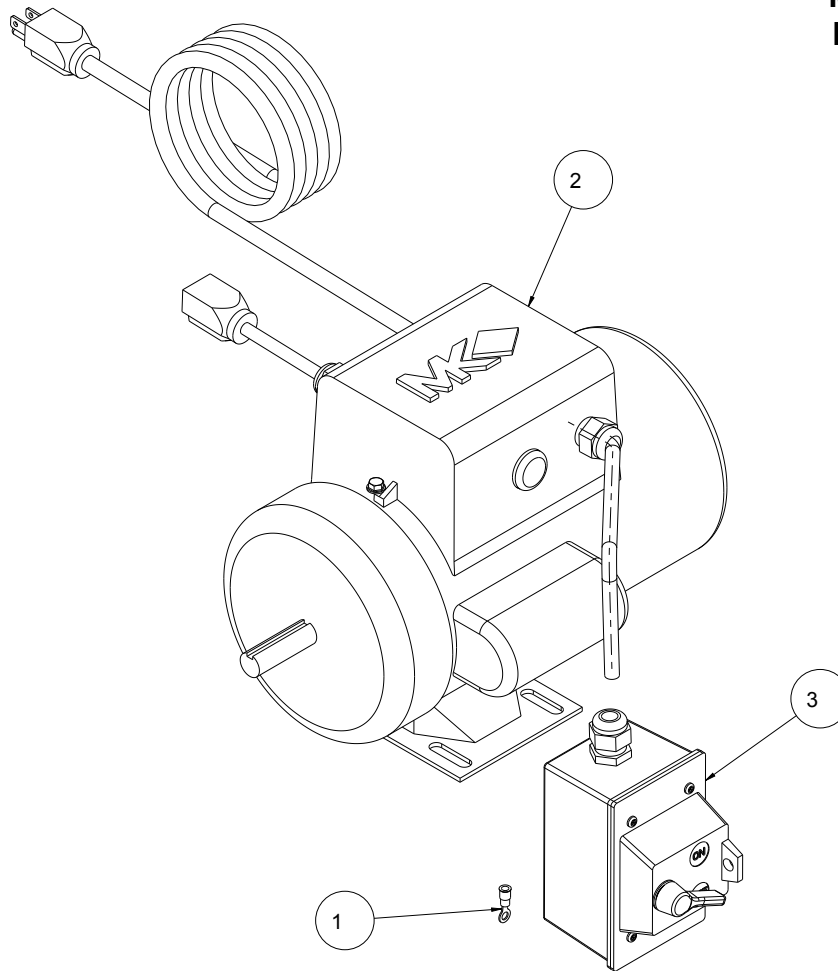
| Item | Description | Part# | Qty |
|------|--|--------|-----|
| 1 | CASTING, 101/990 LNR BRG MT-COM | 135855 | 1 |
| 2 | SCREW, HEX HD, 5/16 - 18 X 1 | 151743 | 6 |
| 3 | WASHER, LOCK, SPLIT, 5/16 | 151747 | 6 |
| 4 | WASHER, FLAT, SAE, 5/16 | 151754 | 7 |
| 5 | ASSEMBLY, ROLLER WHEEL | 151756 | 1 |
| 6 | SPACER, GUIDE BAR COVER, COMMON | 152393 | 2 |
| 7 | SCREW, 5/16 - 187 X 1/2 HEX HEAD MACHINE | 152473 | 1 |
| 8 | COVER, 3/4 X 37 GUIDE BAR | 153219 | 1 |
| 9 | BAR, 3/4 X 37 LINEAR GUIDE, 101 | 153492 | 1 |
| 10 | SCREW, 1/4 - 20 X 5/16 SOCKET HEAD SET | 154223 | 2 |
| 11 | SCREW, 1/4 - 20 X 1/2 SOCKET HEAD SET | 155804 | 1 |
| 12 | TABLE, PRO24, OVERMOLD (COMP) | 161182 | 1 |
| 13 | TABLE, EXTENSION (COMP) | 162075 | 1 |
| 14 | BRACKET, TABLE STOP | 169222 | 1 |

MK-101 Pro24
Part # 158478



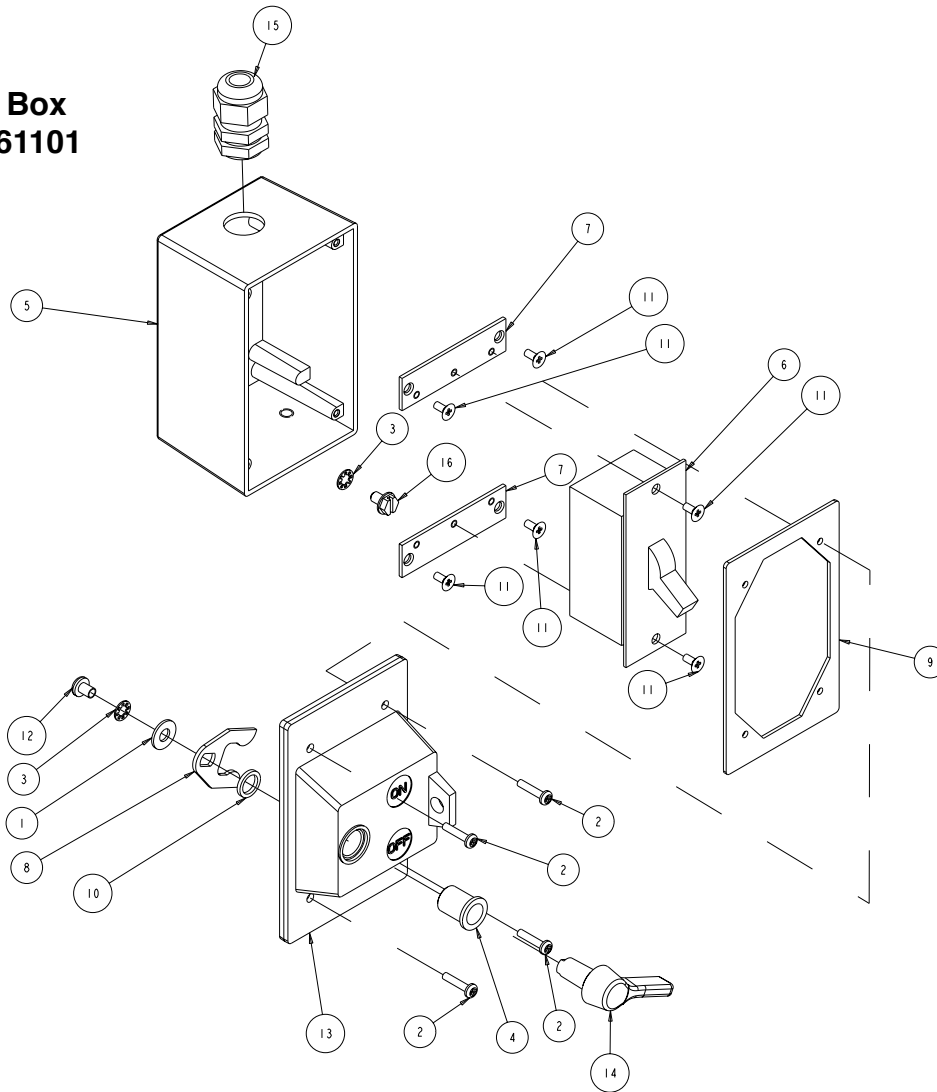
| Item | Description | PART # | QTY. |
|------|--|-----------|------|
| 1 | KEY, 3/16 SQ X 1 - 1/8 | 150344 | 1 |
| 2 | WASHER, FLAT, SAE, 1/4 | 151915 | 6 |
| 3 | SCREW, HEX HD, 1/4 - 20 X 3/4 | 152370 | 5 |
| 4 | ASSY, BLADE GUARD, 101 | 152582 | 1 |
| 5 | WASHER, LOCK, SPLIT, 1/4 | 152591 | 6 |
| 6 | SCREW, HEX HD, TAP, 1/4 - 20 X 1 | 152676 | 1 |
| 7 | SCREW, 5/16 - 18 X 3/8 SOCKET HEAD SET | 157083 | 1 |
| 8 | ASSY, SUB, CTTG HEAD MK-101 | 158191 | 1 |
| 9 | BELT, 6J260 | 158194 | 1 |
| 10 | PULLEY, 6J19 X 5.8 BORE | 158199 | 1 |
| 11 | CASTING, 101 BLET GUARD - COMP | 158319-01 | 1 |
| 12 | BRACKET, INNER BELTGUARD | 158611 | 1 |
| 13 | ASSY, MTR, 1-1/2 HP 120V 60HZ | 160486 | 1 |

MK-101 Pro24
Part # 160486



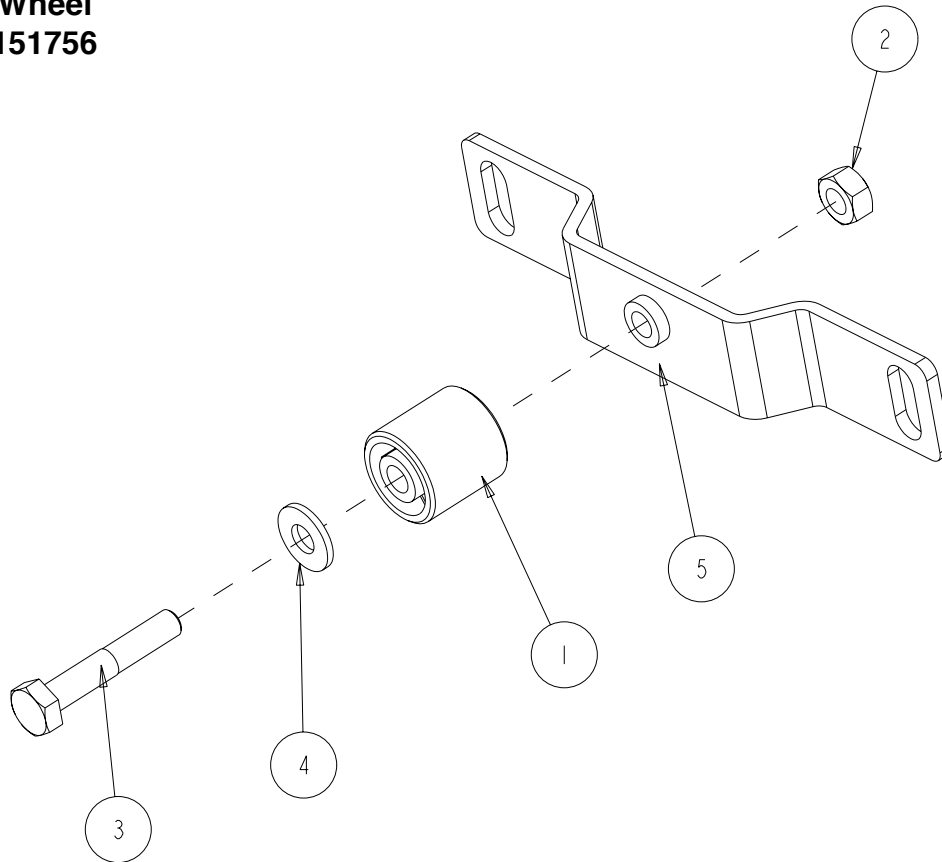
| Item | Description | Part# | Qty |
|------|---------------------------------|--------|-----|
| 1 | TERMINAL, 16 -14 AWG X #10 RING | 154540 | 1 |
| 2 | MTR, 1- 1/2 HP 120V 60HZ | 160484 | 1 |
| 3 | ASSY, SWITCH BOX, 30AMP, LIF11 | 161101 | 1 |

**Switch Box
Part # 161101**

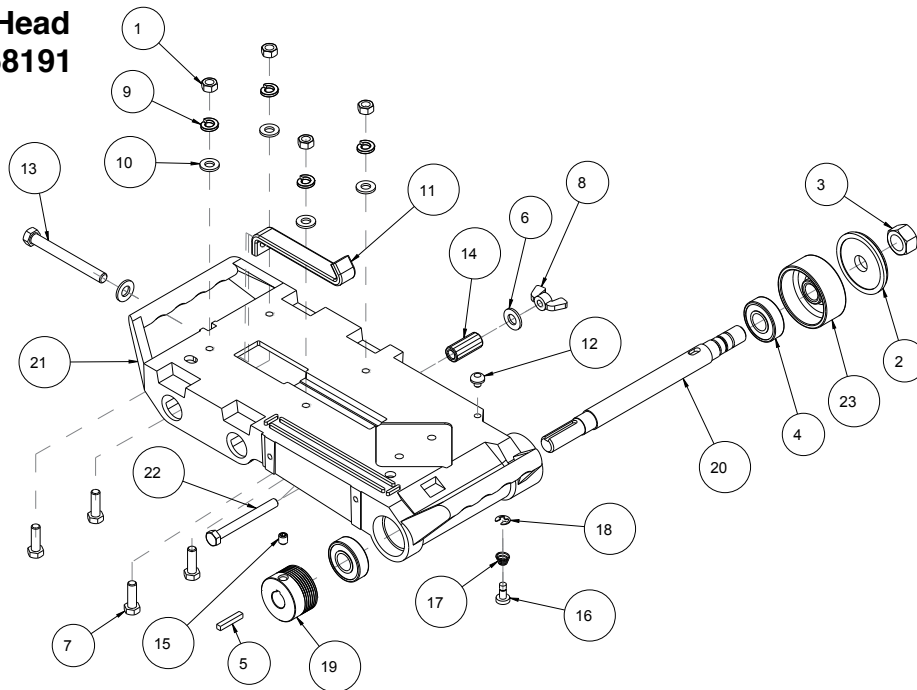


| Item | Description | Part# | Qty |
|------|-----------------------------------|--------|-----|
| 1 | WASHER, #10 SAE FLAT | 154369 | 1 |
| 2 | SCREW, PAN HD PHIL 6 - 32 X 5/8 | 157393 | 4 |
| 3 | WASHER #10, INTERNAL TEETH | 158336 | 2 |
| 4 | BUSHING, SWITCH, 30 AMP | 158799 | 1 |
| 5 | BOX, 30A SWITCH (COMP) | 159487 | 1 |
| 6 | SWITCH, 30 AMP MOTOR CONTROLLER | 159488 | 1 |
| 7 | PLATE, MOUNTING, SWITCH | 159489 | 2 |
| 8 | LEVER, ON/OFF, 30 AMP SWITCH | 159490 | 1 |
| 9 | GASKET, COVER, 30 AMP SWITCH | 159491 | 1 |
| 10 | SEAL, LEVER, 30 AMP SWITCH | 159492 | 1 |
| 11 | SCREW, FLAT HD PHIL 6 - 32 X 5/16 | 159493 | 6 |
| 12 | SCREW, PAN HD PHIL 10 24 X 5/16 | 159494 | 1 |
| 13 | COVER, 30A SWITCH (COMP) | 159539 | 1 |
| 14 | LEVER, ACTUATOR (COMP) | 159539 | 1 |
| 15 | STRAIN RELIEF, HEYCO 3213 | 159582 | 1 |
| 16 | SCREW, HEX HD FL 10 24X 5/16 | 159597 | 1 |

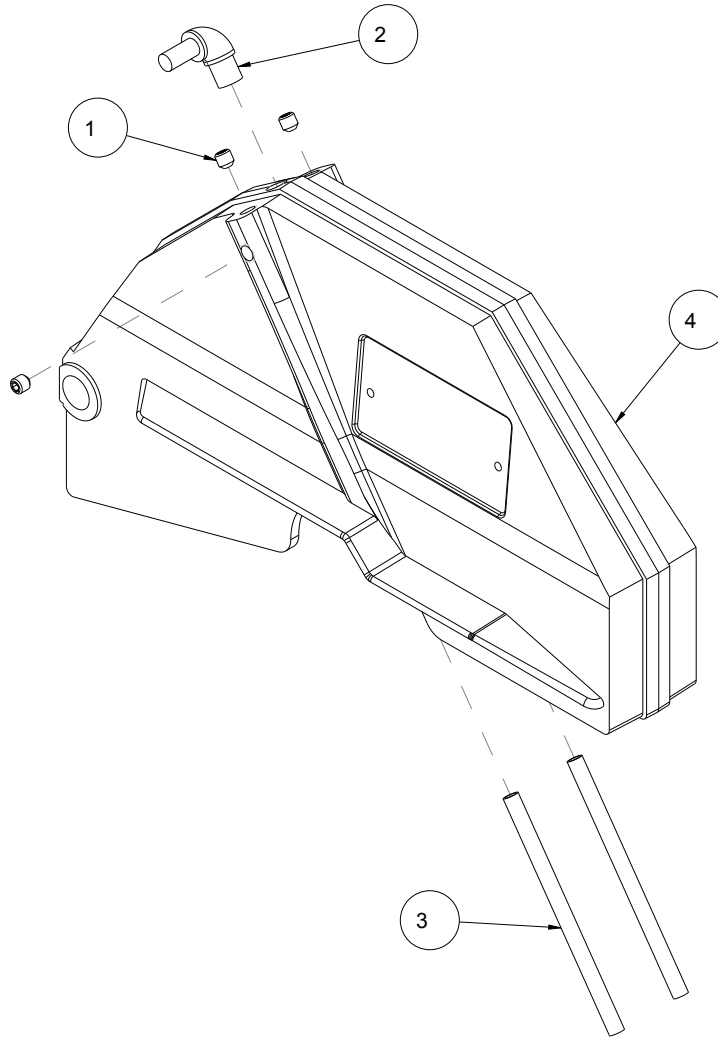
**Roller Wheel
Part # 151756**



| Item | Description | Part# | Qty |
|------|-----------------------|--------|-----|
| 1 | WHEEL, ROLLER | 151799 | 1 |
| 2 | NUT, 1/4 - 20 HEX | 151893 | 1 |
| 3 | BELT, MICRO-V, 260J6 | 151914 | 1 |
| 4 | WASHER, 1/4 SAE FLAT | 151915 | 1 |
| 5 | BRACKET, ROLLER WHEEL | 154021 | 1 |



Cutting Head
Part # 158191


| Item | Description | Part# | Qty |
|------|---|--------|-----|
| 1 | NUT, HEX, 5/16 - 18 | 101196 | 4 |
| 2 | FLANGE, OUTER 2-3/8 | 135830 | 1 |
| 3 | NUT, HEX, 5/8 - 18 | 135848 | 1 |
| 4 | BEARING, BALL, 17 X 40 X 12MM | 137711 | 2 |
| 5 | KEY, 3/16 SQ X 1 - 1/8 | 150344 | 1 |
| 6 | WASHER, 3/8 SAE FLAT | 150923 | 2 |
| 7 | SCREW, HEX HD, 5/16 - 18 X 1 | 151743 | 4 |
| 8 | NUT, WING, NYLK, 5/16 - 18 | 151746 | 1 |
| 9 | WASHER, 5/16 SPLIT LOCK | 151747 | 4 |
| 10 | WASHER, 5/16 SAE FLAT | 151754 | 4 |
| 11 | STRAP, 1 INCH MOTOR ADJUSTMENT | 152673 | 1 |
| 12 | BUMPER, RUBBER, 1/2 DIA | 152674 | 1 |
| 13 | BOLT, 3/8 - 16 X 3/12 HEX HEAD TAP | 153147 | 1 |
| 14 | PIVOT, BLADE GUARD | 153208 | 1 |
| 15 | SCREW, SOCKET HEAD SET, 5/16 - 18 X 3/8 | 157083 | 1 |
| 16 | BUTTON, SHAFT LOCK | 158200 | 1 |
| 17 | SPRING, BLADE SHAFT LOCK | 158201 | 1 |
| 18 | RING, RETAINING, 1/4 E-STYLE | 158202 | 1 |
| 19 | PULLEY, 6J17 X 5/8 BORE | 158214 | 1 |
| 20 | SHAFT, BLADE | 158222 | 1 |
| 21 | CASTING, 10" CUTTING HEAD - COMP | 158224 | 1 |
| 22 | SCREW, HEX HD, TAP, 5/16 - 18 X 3 | 162473 | 1 |
| 23 | FLANGE, Ø 2- 3/8 INNER | 162758 | 1 |



| Item | Description | Part# | Qty |
|------|--|--------|-----|
| 1 | SCREW, 5/16 - 18 X 1/2 SOCKET HEAD SET | 152607 | 3 |
| 2 | ELBOW, 1/8 MNPT X 1/4 BARB 90DEG | 154652 | 1 |
| 3 | TUBE, WATER | 155389 | 2 |
| 4 | CASTING, 101 BLD GUARD-DC-COMP | 162481 | 1 |

ACCESSORIES

| ITEM | NUMBER | DESCRIPTION | |
|------|-----------|---|---|
| 1 | 137166 | MK-200 10" x .060 x 5/8" Premium grade tile blades for fast, smooth, chip-free |  |
| 2 | 128074 | MK-215 18" x .060 x 5/8" Supreme grade diamond blade for hard materials |  |
| 3 | 153252 | MK-315 10" x .080 x 5/8" Supreme super hi-rim diamond blade |  |
| 4 | 134577-MK | Dual 45° Flat Angle Guide |  |
| 5 | 153201-MK | 45° Bullnose Miter |  |
| 6 | 134569-MK | 90° Protractor |  |
| 7 | 152792 | Dressing Stone |  |
| 8 | 152610 | Ground Fault Circuit Inter- rupter |  |

ORDERING INFORMATION

You may order MK Diamond products through your local MK Diamond distributor or, you may order direct from MK Diamond.

When ordering direct from MK Diamond, please have the following information ready before calling:

- The Model Number of the saw
- The Serial Number of the saw
- Where the saw was purchased and when
- The Part Number for the part(s) being ordered
- The Part Description for the part(s) being ordered

NOTE: There is a \$25.00 minimum order when ordering direct from MK Diamond. A \$5.00 charge will be added to orders having a net billing value under \$50.00. All purchases must be made using VISA, MasterCard or American Express.

All parts may be ordered by calling toll free to – 800 421-5830 or 310 539-5221 and asking for Customer Service. For technical questions, call – 800 474-5594.

RETURN MATERIALS POLICY

To expedite the service relative to the return of a product purchased through MK Diamond, please observe the following:

NOTE: When returning all items, they must have been purchased within the previous twelve (12) months.

- Have the Model Number of the saw
- Have the Serial Number of the saw
- Have the location of where the saw was purchased
- Have the date when the saw was purchased
- Contact Customer Service for approval to return the item(s)
- Obtain a Returned Goods Number (RGA) authorizing the return
- Follow the packaging instructions in the following section
- Ensure your item(s) are prepaid to the destination

For returned items, call toll free to – 800 421-5830 or 310 539-5221 and ask for Customer Service. For technical questions, call – 800 474-5594 or 310 257-2845.

PACKAGING INSTRUCTIONS

- Remove the Cutting Head and Support Angle Assembly
- Dry the saw before shipping
- When packing, include the following: Saw, Diamond Blade, Blade Guard and Support Angle Assembly and Adjustable Cutting Guide (Other Accessories are not required)
- Package the unit in its original container or one of comparable size (do not ship the unit partially exposed)
- Ensure all parts are secured in the packaging to prevent moving

AUTHORIZED SERVICE CENTERS

For quicker repair time, you may contact MK Diamond Customer Service, toll free, at 800 421-5830 or 310 539-5221 for the Authorized Service Center closest to you or visit our web site at www.mkdiamond.com. For technical questions, call – 800 474-5594.

CONTACT:

Please contact MK Diamond Products, Inc. Customer Service Department with any questions you might have regarding distributors, parts or service.

Telephone: **(800) 421-5830**

Fax: **(310) 539-5158**

E-mail: **Customer_Service@MKDiamond.com**

Customer Service Hours: **Monday through Friday, 6AM-4PM PST**

MK Diamond Products, Inc.

1315 Storm Parkway

Torrance, CA 90501

MK DIAMOND PRODUCTS, INC. LIMITED WARRANTY

MK DIAMOND PRODUCTS, INC. will guarantee every machine they build, to be free from defects in material and workmanship for (1) one year from date of purchase. The obligation of MK DIAMOND PRODUCTS, INC. under this warranty is limited to the repair or replacement of any parts which, under normal use, prove to be defective in material or workmanship. The parts involved or the unit in question should be returned to MK DIAMOND PRODUCTS, INC. or to a point designated by us, transportation prepaid.

This warranty does not obligate us to bear the cost of labor or transportation charges in connection with replacement or repair of defective parts. Likewise, it shall NOT apply to any unit which has been subjected to misuse, neglect or accident. This warranty does NOT apply to any machine which has been repaired or altered outside our factory.

This warranty does NOT obligate MK DIAMOND PRODUCTS, INC., with respect to items not of our manufacture, such as engines, motors, hydraulics, etc., which are subject to their own guarantees and warranties.

We shall in no event be liable for consequential damages or contingent liabilities arising out of failure of any equipment or parts to operate properly.

© COPYRIGHT 2012, MK DIAMOND PRODUCTS, INC. ALL RIGHTS RESERVED.

The MK Diamond logo is a registered trademark of MK Diamond Products, Inc. and may not be used, reproduced, or altered without written permission. All other trademarks are the property of their respective owners and used with permission.

MK Diamond may have patents, applications, trade marks, copyrights of other intellectual property right covering this product in this document.

This manual MUST accompany the equipment at all times. This manual is considered a permanent part of the equipment and should remain with the unit if resold.

The information and specifications included in this publication were in effect at the time of approval for printing.

MK-101 Pro24 JCS
OWNERS MANUAL & OPERATING INSTRUCTIONS



MK Diamond Products, Inc.

MK Diamond Products, Inc.
1315 Storm Parkway
Torrance, CA 90501

Toll-Free: (800) 421-5830
Phone: (310) 539-5221
Fax: (310) 539-5158
www.mkdiamond.com